



*the*  
**FIELDS**  
*on Sand Lake*  
LUXURY LIVING CONDOS



# WELCOME TO LUXURY CONDOS AT THE FIELDS ON SAND LAKE ROAD

If you're looking for a 55+ community with spacious living, a desirable area, and a convenient location, these condos are for you. Enjoy top-notch amenities, open floor plans, heated underground parking, and premium finishes. If you have been searching for the perfect place to call home, this is it. Welcome home!





## THE FIELDS EXPERIENCE

It's all about location. With easy access to restaurants, shopping, entertainment, grocery stores, and medical facilities, this complex keeps you close to everything! Gather your friends and neighbors in the fully equipped resident lounges or grill out in one of the picnic areas. These condos are all about simplifying your life with maintenance-free living and resort-style amenities.

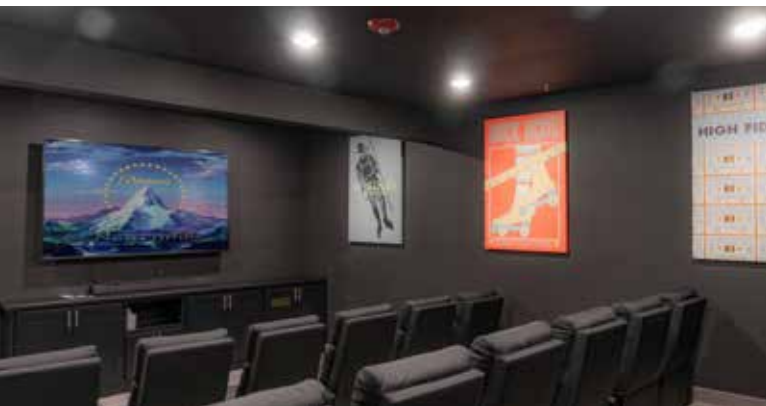


## SUITE FEATURES:

- Well-planned design
- Private balcony or patio
- 9' ceilings
- Open living spaces
- Upgraded lighting
- Varietal upgraded flooring
- Forced air furnaces
- Central air conditioning
- Fireplace
- All upgraded appliances including washer and dryer
- Internet (WiFi) and basic cable TV









## AMENITIES:

- Elevator
- Walk-able, safe, well-lit neighborhood
- Secured building
- Heated underground parking
- Indoor car wash area
- Outdoor grilling area
- Outdoor gathering areas
- Game room
- Fitness room
- Theater room
- Activities area
- Media center
- Library lounge
- Coffee/snack bar
- On-site hotel room





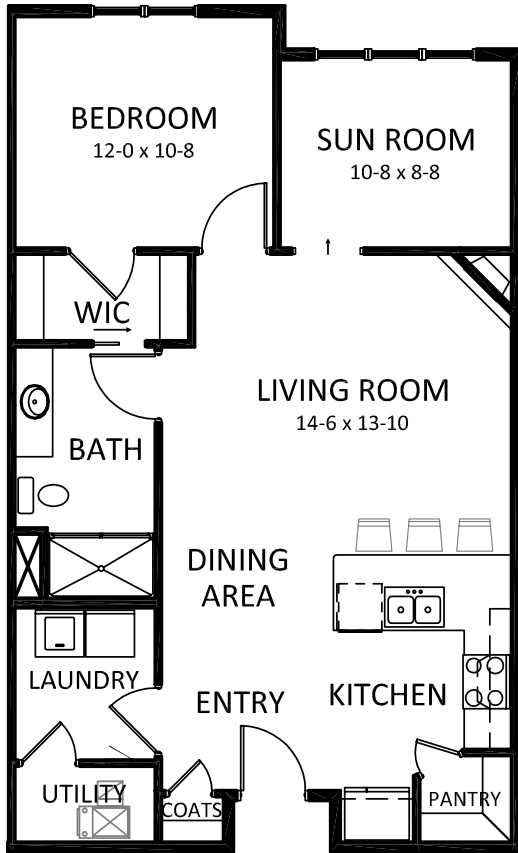


## ON-SITE GUEST/HOTEL ROOM FEATURING:

- Queen Size Bed
- En Suite Bathroom
- Sitting Area
- TV
- Linens
- Towels

Two Night Minimum  
Seven Night Maximum





# UNITS

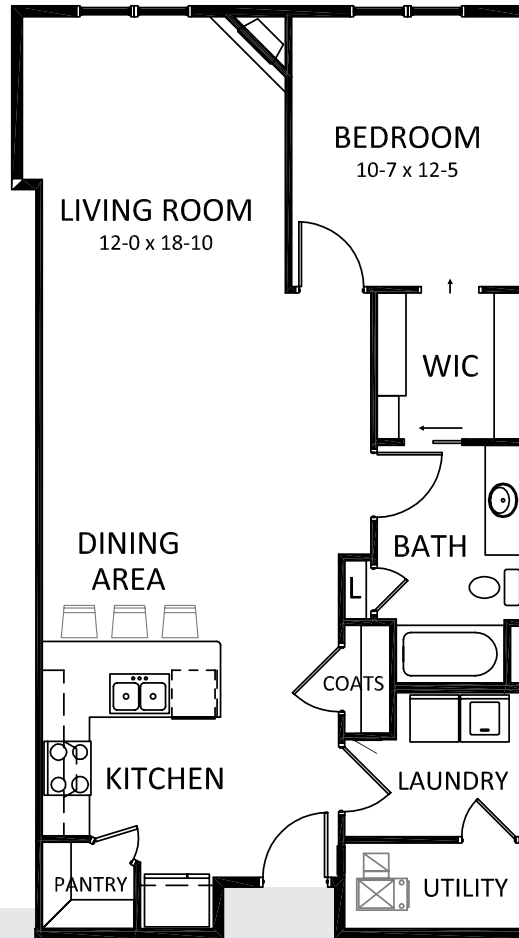
1030	3030
1032	3032
1044	3044
1046	3046
2030	
2032	
2044	
2046	

1 BEDROOM | SUNROOM | PRICE/MO | 843 SQ.FT.

UNITS

3041

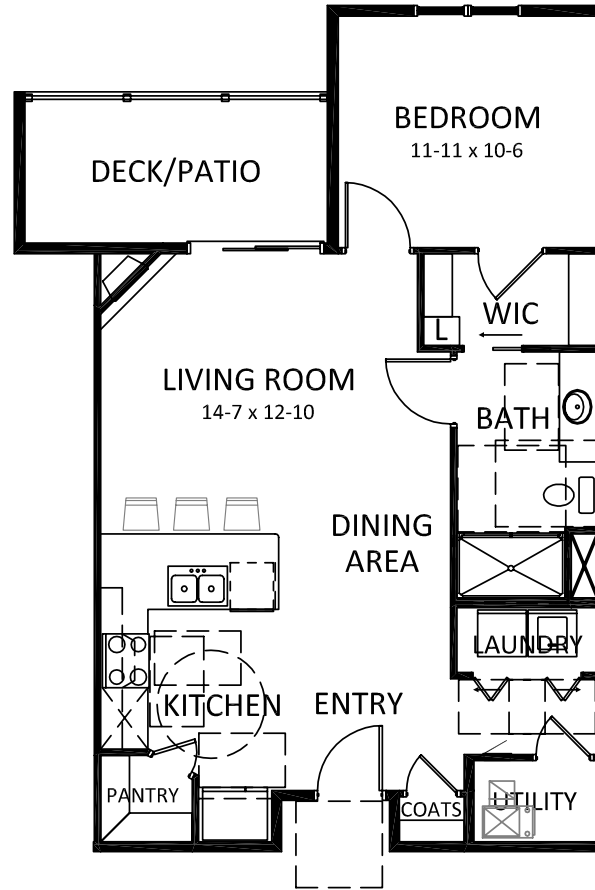
3043



10

1 BEDROOM | NO PATIO | PRICE/MO | 931 SQ.FT.

UNIT  
1039



1 BEDROOM | ACCESSIBLE | PRICE/MO | 744 SQ.FT.

# UNITS

1028 3036

1040 3040

1048 3048

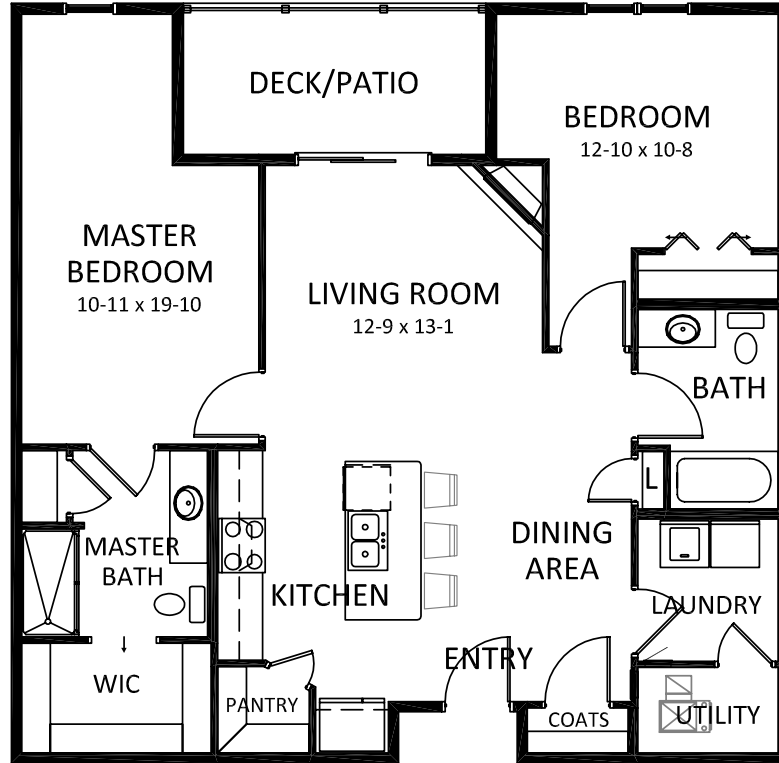
2028

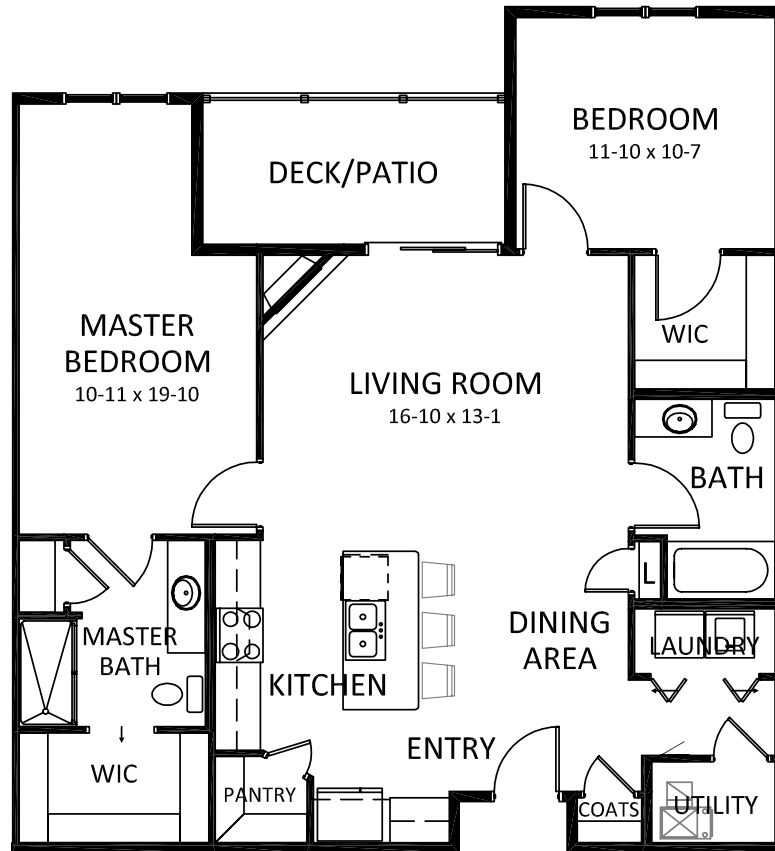
2036

2040

2048 ACCESSIBLE  
UNIT

3028 1036





UNITS

1045

2039

2045

3039

3045

2 BEDROOM | 2 WALK-IN CLOSETS | PRICE/MO | 1125 SQ.FT.

# UNITS

1031

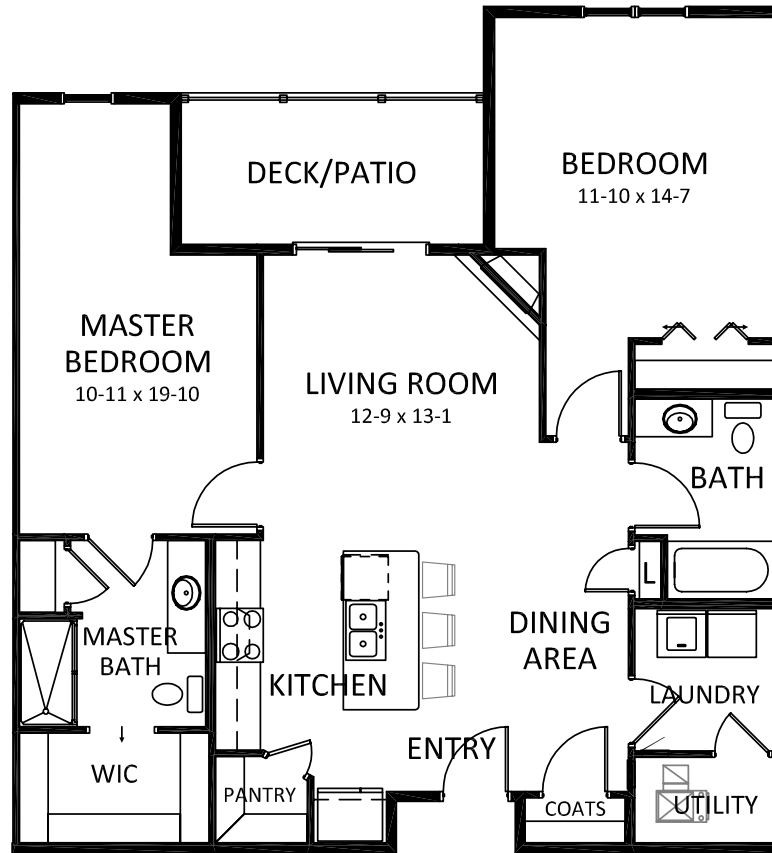
1053

2031

2053

3031

3053



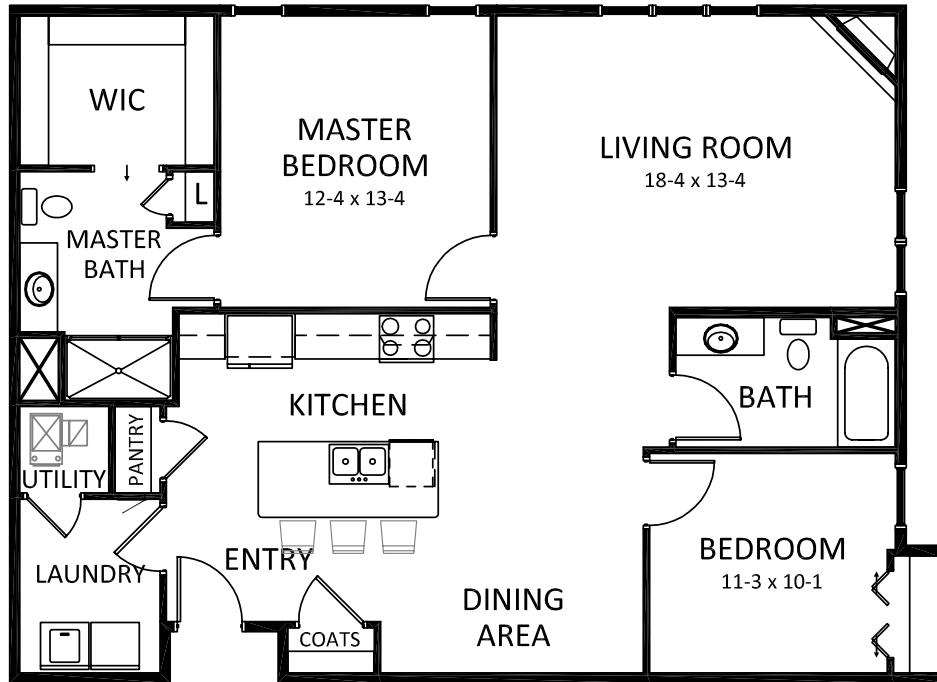
2 BEDROOM | LARGE SECOND BEDROOM  
PATIO | PRICE/MO | 1129 SQ.FT.



UNITS

1026

1050



2 BEDROOM | LARGE LIVING ROOM  
NO PATIO | PRICE/MO | 1234 SQ.FT.

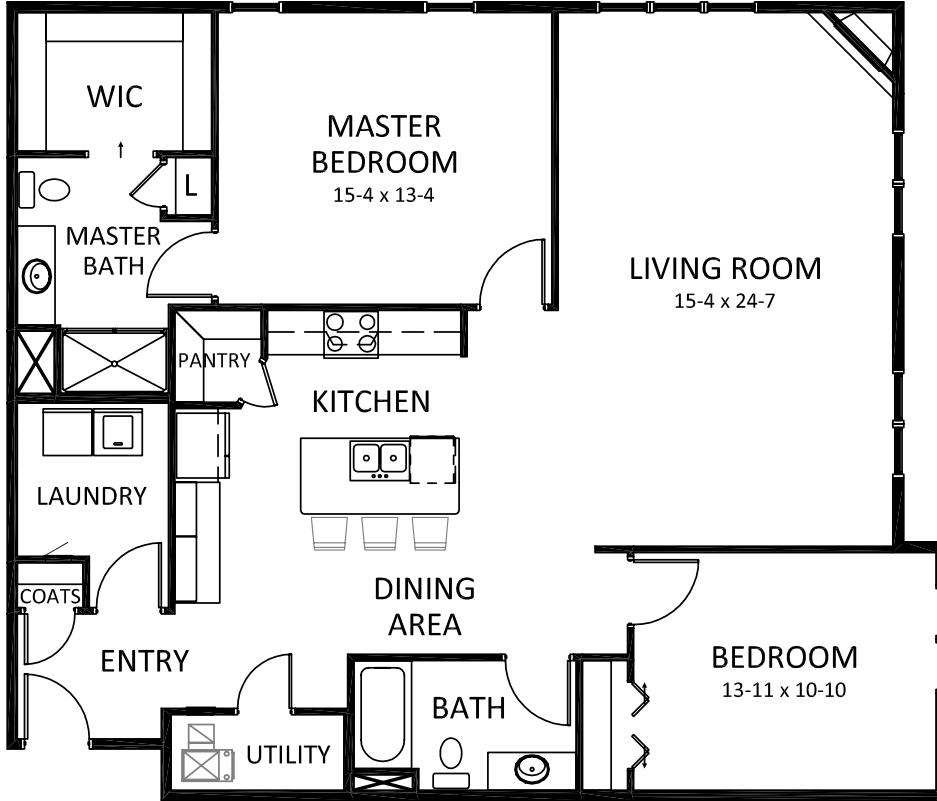
UNITS

2026

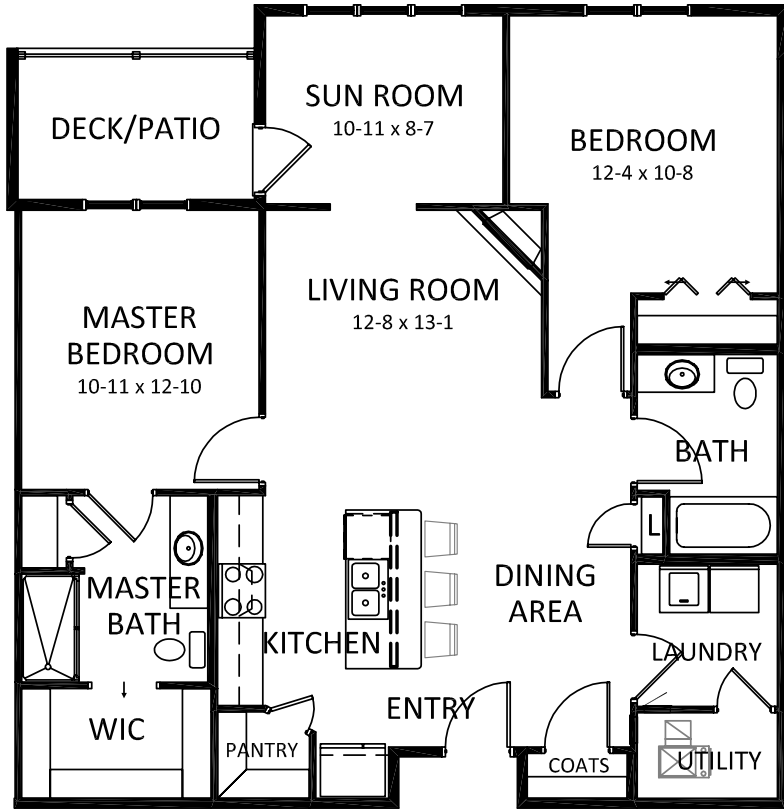
2050

3026

3050



2 BEDROOM LARGE MASTER | NO PATIO  
PRICE/MO | 1462 SQ.FT.



## UNITS

1033	2047
1035	2049
1037	2051
1047	3033
1049	3035
1051	3037
2033	3047
2035	3049
2037	3051

2 BEDROOM | SUNROOM | PRICE/MO | 1150 SQ.FT.

# UNITS

1034

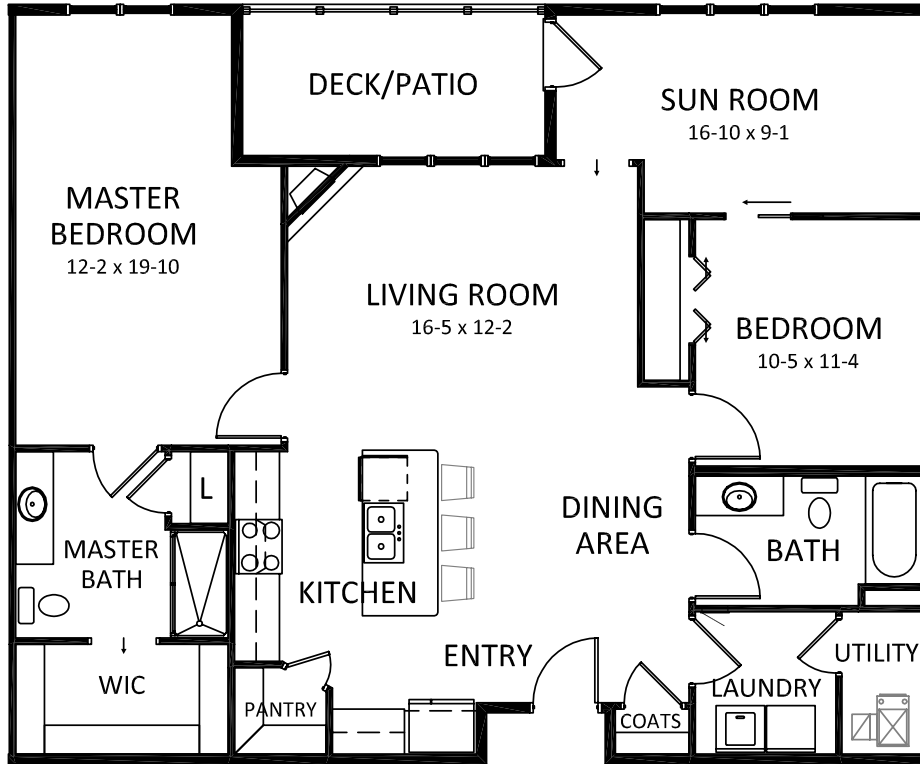
1042

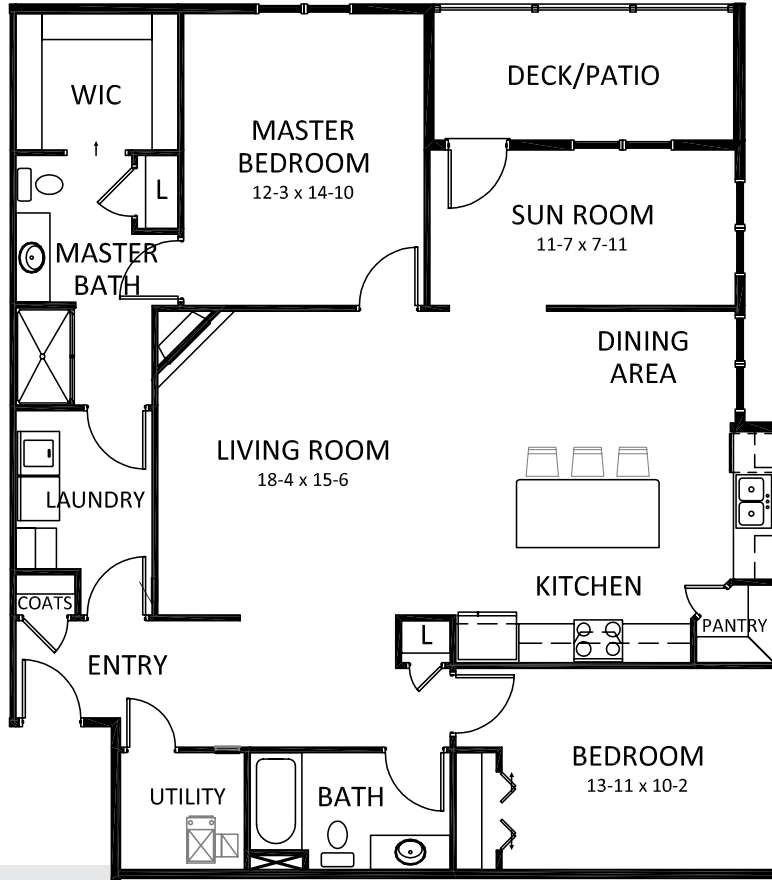
2034

2042

3034

3042





UNITS
1029
1055
2029
2055
3029
3055

2 BEDROOM | 1 KITCHEN WINDOWS  
 SUNROOM | PRICE/MO | 1520 SQ.FT.

# LET'S CHAT



1641 Sand Lake Rd  
Onalaska, WI 54650



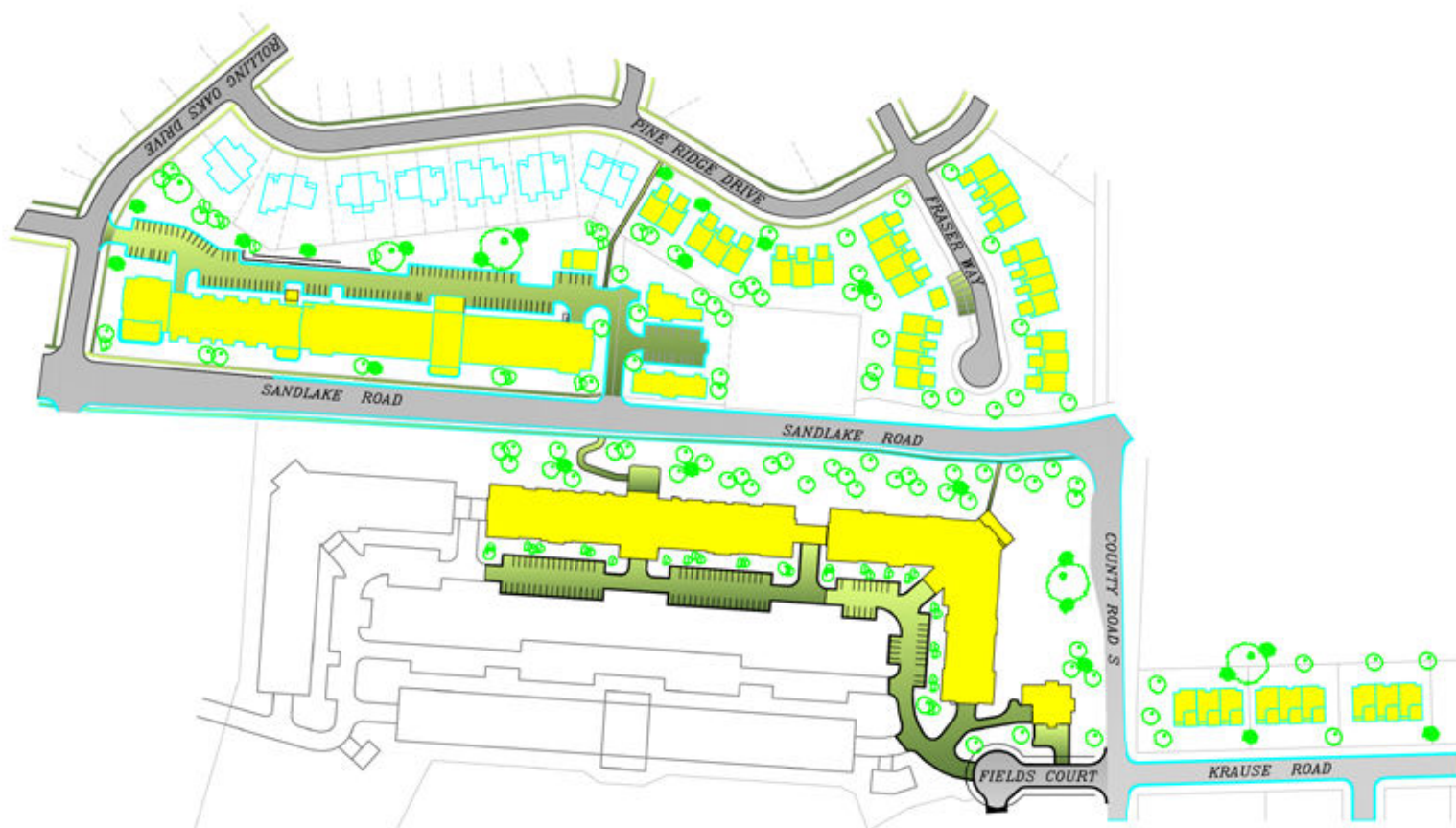
608.783.4785



[leasing@traditionaltrades.net](mailto:leasing@traditionaltrades.net)



[traditionaltrades.net](http://traditionaltrades.net)





# Traditional Trades

