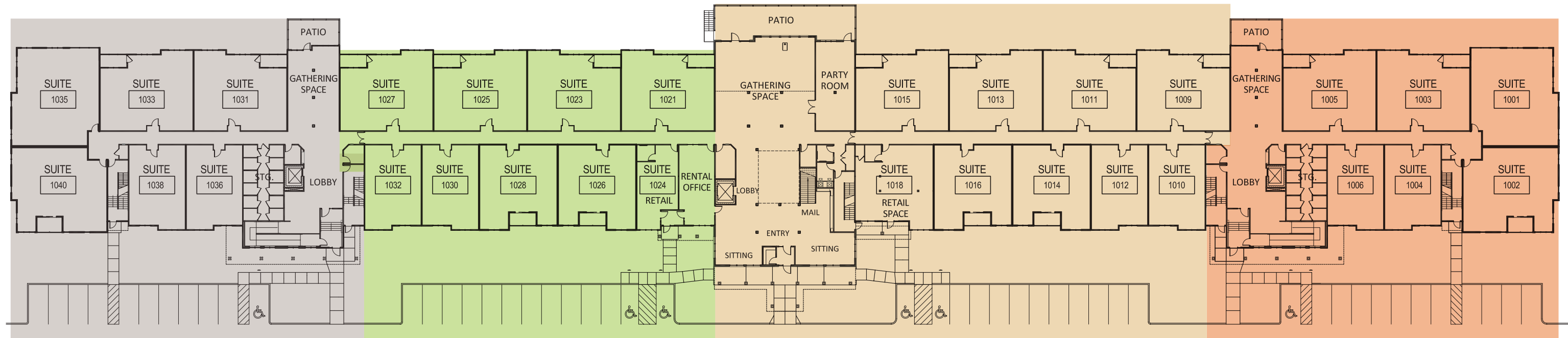


**COMPLETION PHASES**



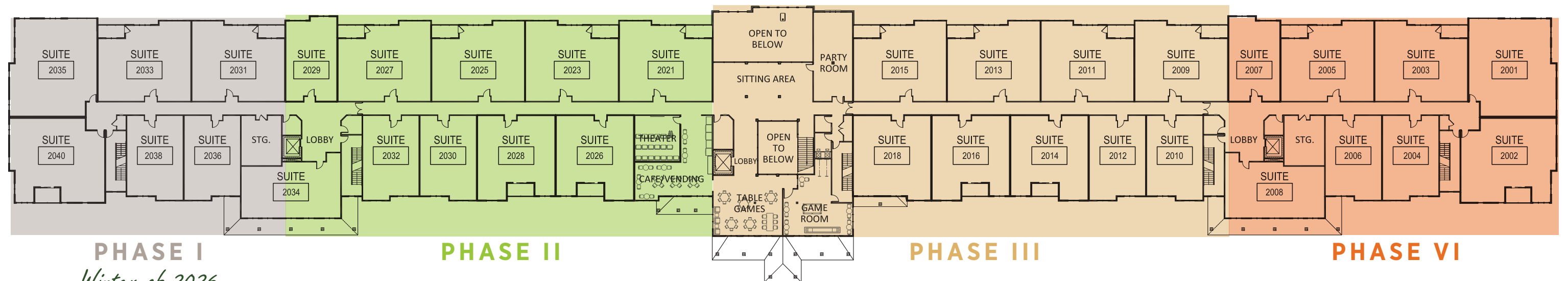
**PHASE I**  
*Winter of 2026*

**PHASE II**

**PHASE III**

**PHASE VI**

**1ST FLOOR PLAN**



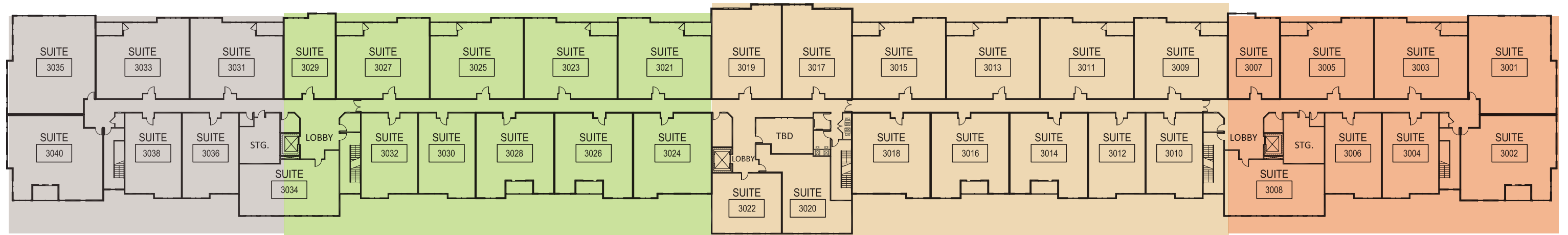
**PHASE I**  
*Winter of 2026*

**PHASE II**

**PHASE III**

**PHASE VI**

**2ND FLOOR PLAN**



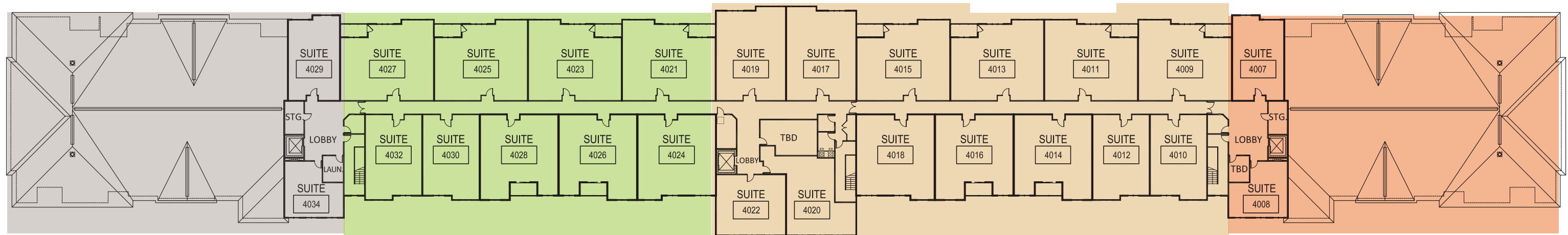
**PHASE I**  
*Winter of 2026*

**PHASE II**

**PHASE III**

**PHASE VI**

**3RD FLOOR PLAN**



**PHASE I**  
*Winter of 2026*

**PHASE II**

**PHASE III**

**PHASE VI**

**4TH FLOOR PLAN**

**PRE-LEASING PROCESS – 1800 FIELDS COURT LUXURY CONDOS**

Congratulations! You have taken the first step to secure a beautiful new home at 1800 at The Fields Luxury Condos.

**Step 1: Secure Your Place**

To reserve your position in the pre-leasing selection process, a \$1,500 non-refundable reservation deposit is required. This payment secures your place on the priority list and grants you early access to unit selection. This reservation deposit provides prospective residents with priority access to floor plans, unit selection opportunities, and pre-leasing information before public availability.

**Step 2: Personalized Selection Appointment**

Within a few weeks, our leasing office will contact you to schedule a one-on-one appointment to select your unit. Please be prepared by identifying several preferred options, as availability will be determined in order of deposit placement.

**Step 3: Finalize Your Home**

If you choose to enter into a lease agreement for a residence at 1800 at The Fields, the reservation deposit will be applied toward the security deposit at lease signing.

- 1641 Sand Lake Rd, Onalaska, WI 54650
- 608.783.478
- leasing@traditionaltrades.net
- traditionaltrades.net

